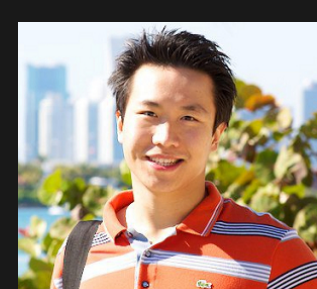


Ji Wang



ji.wang@yale.edu



Bo Ma
UNIVERSITY of
FLORIDA

Alyssa Picard



Joey Schmitt



Debra Fischer



AND



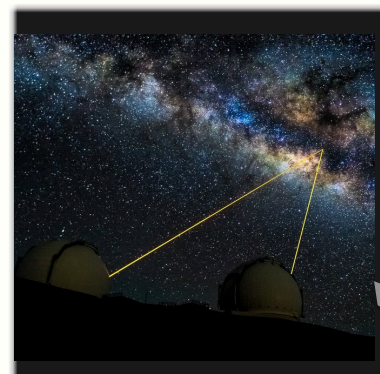
Tabetha Boyajian



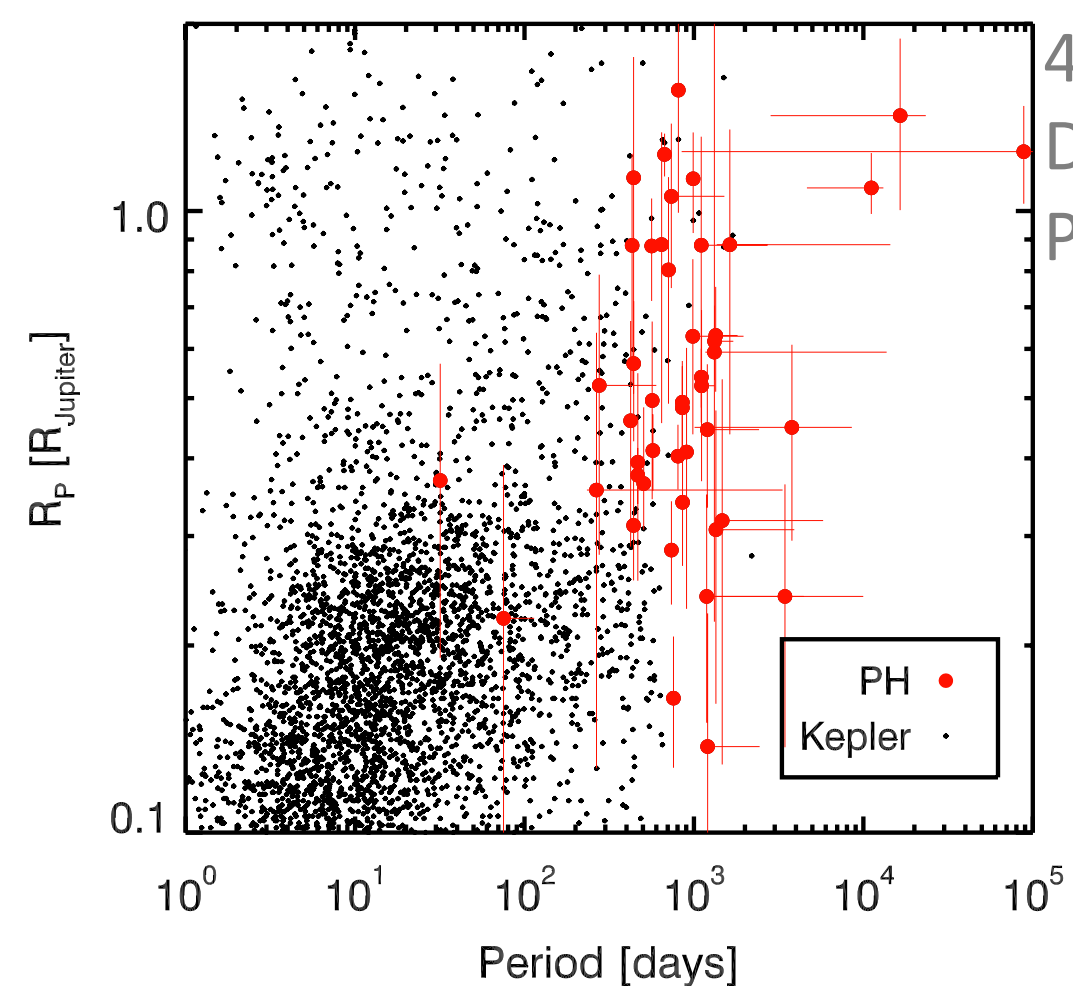
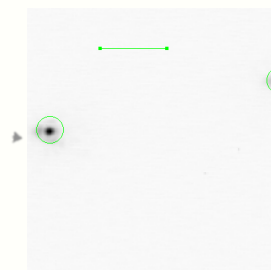
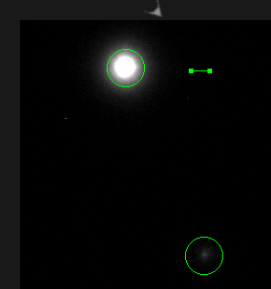
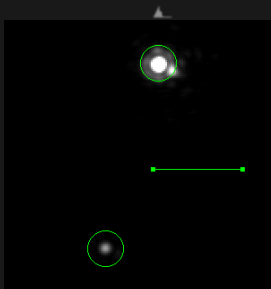
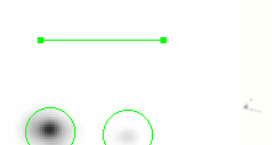
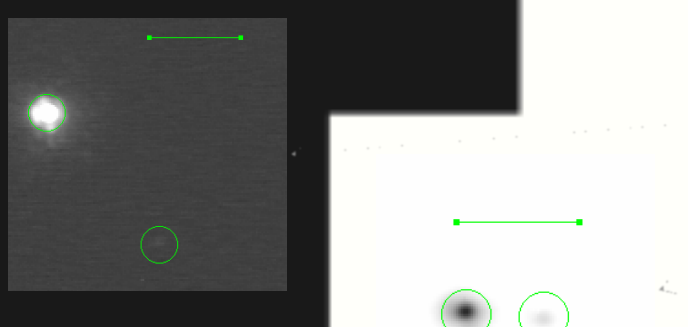
For a copy of this QR poster



Scan here if unsuccessful:



AO imaging for validation @Keck
(horizontal bar = 0.5")



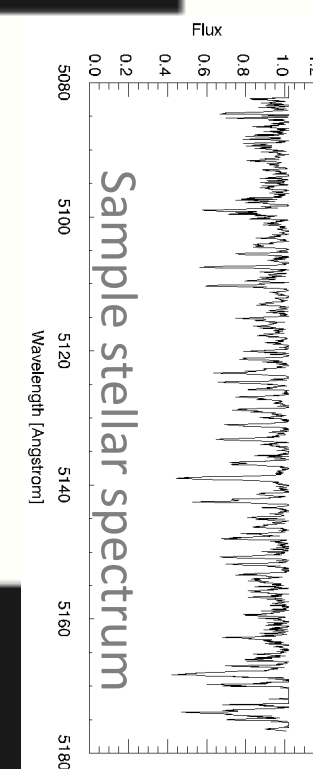
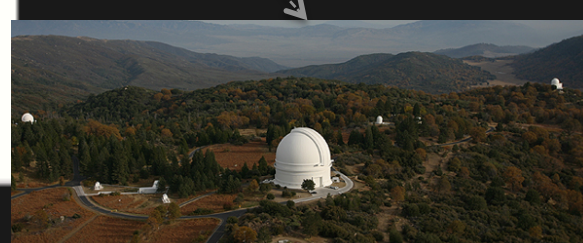
Period ~ 100 – 10000 days
Distance ~ 1 – 10 AU
Kepler cannot detect because most of them have < 3 transits

21 single visible transits
15 double visible transits
10 triple visible transits



Thank you! ERES@PSU

Spectroscopy for stellar properties @Palomar



With a proper assessment of transit-signal recovery rate for Planet Hunters, we can constrain the planet occurrence rate for long-period planets at orbital distances of ~1-3 AU.

Check out Joey Schmitt's poster on the recovery rate for Planet Hunters!