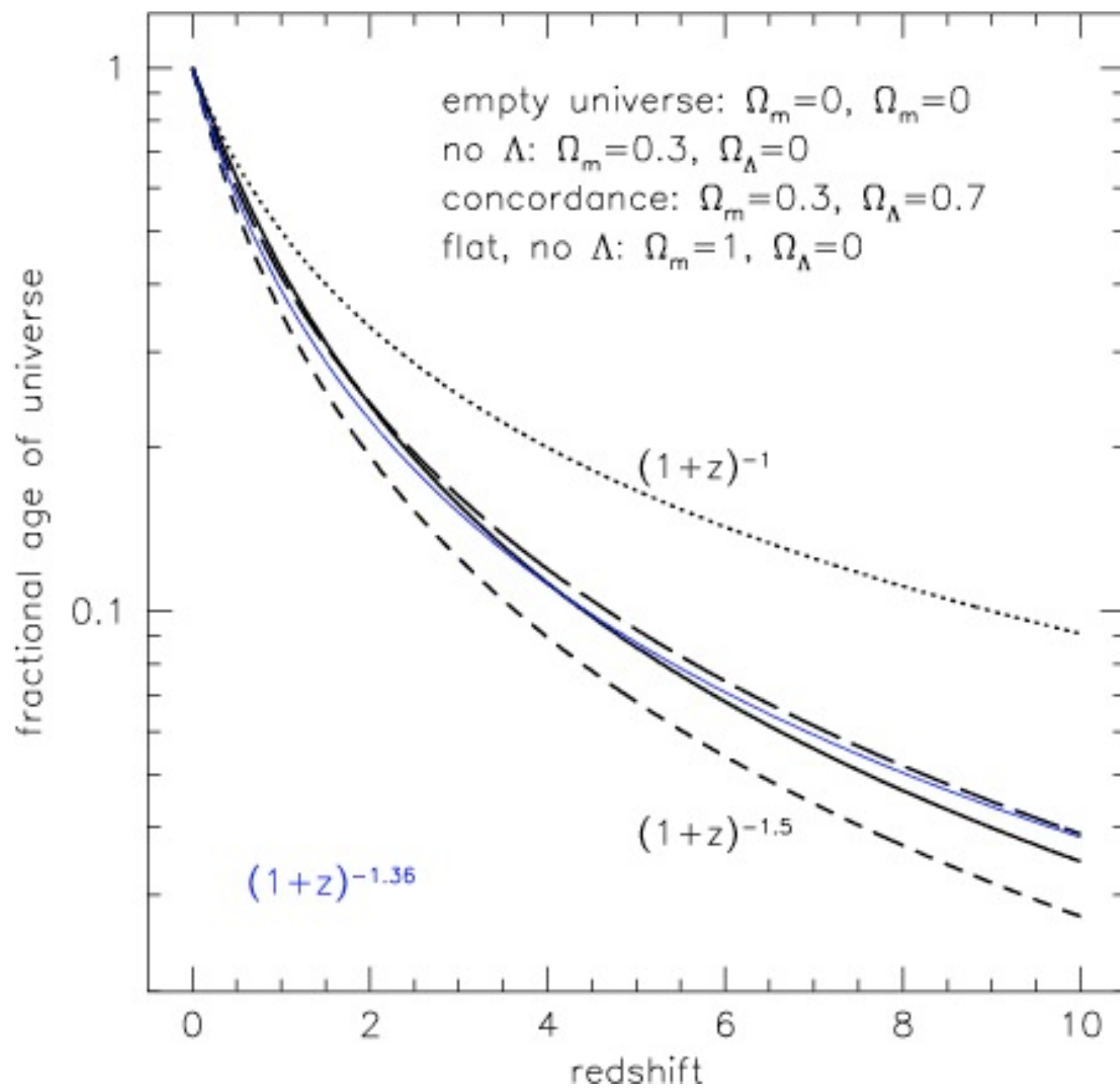
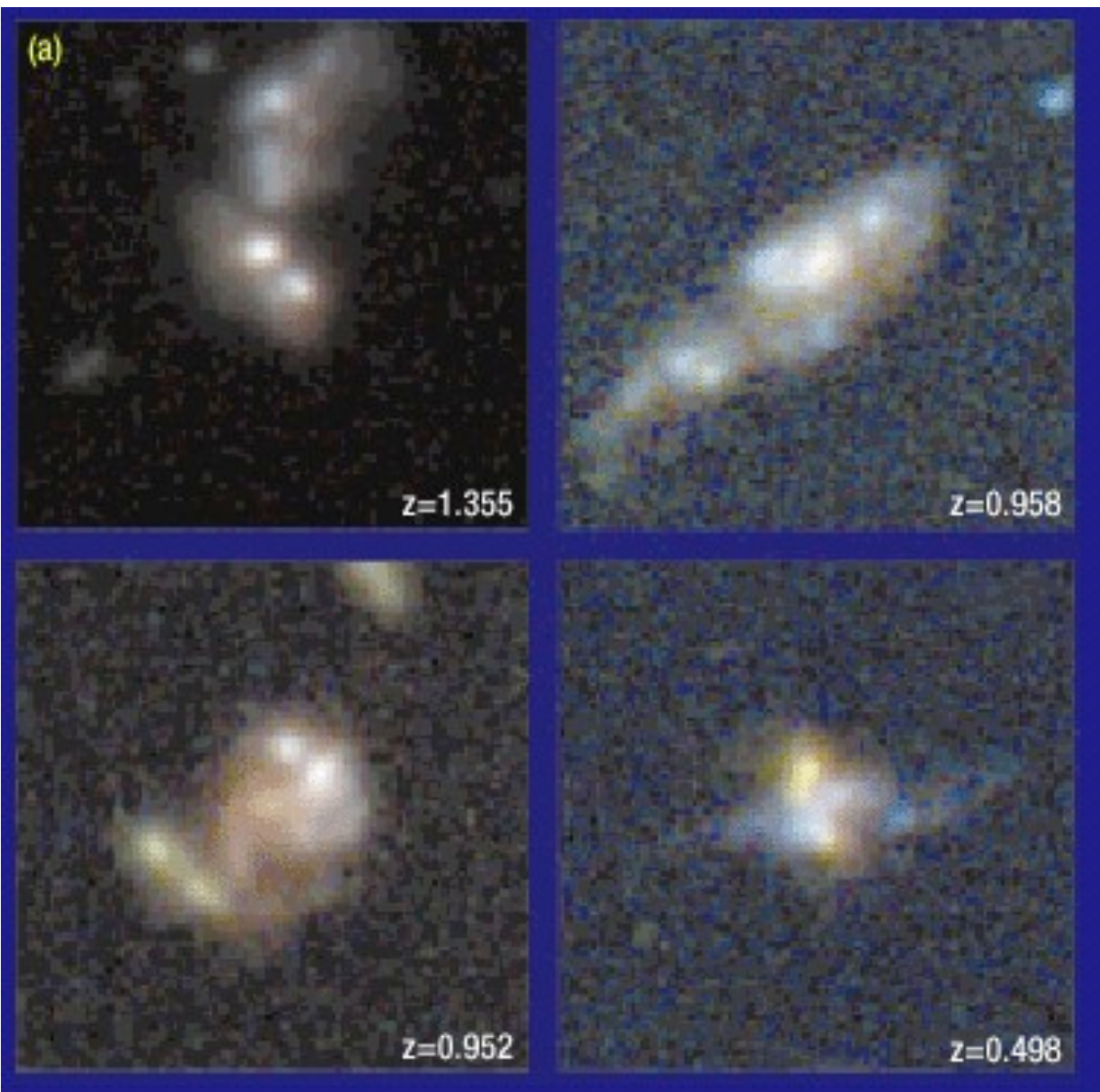
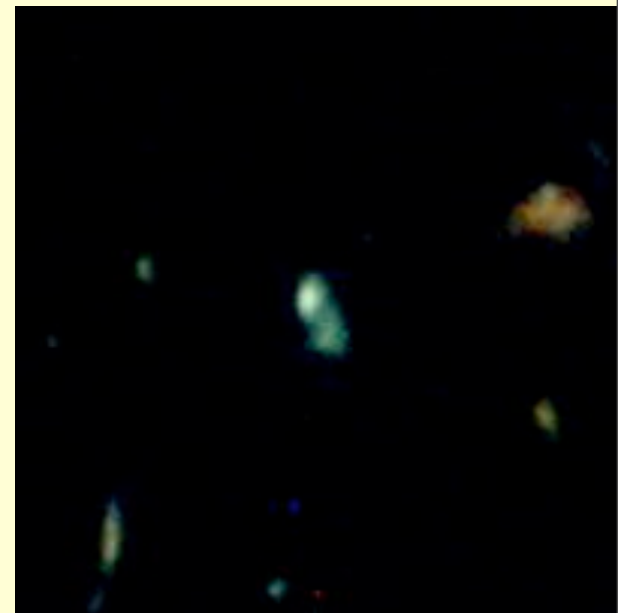
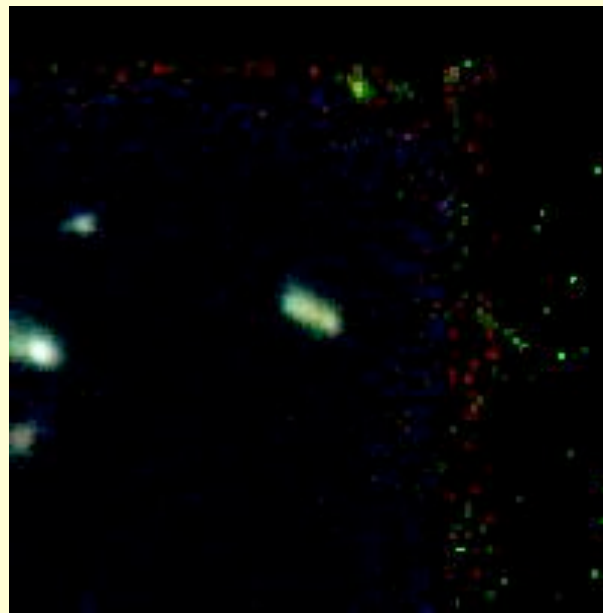


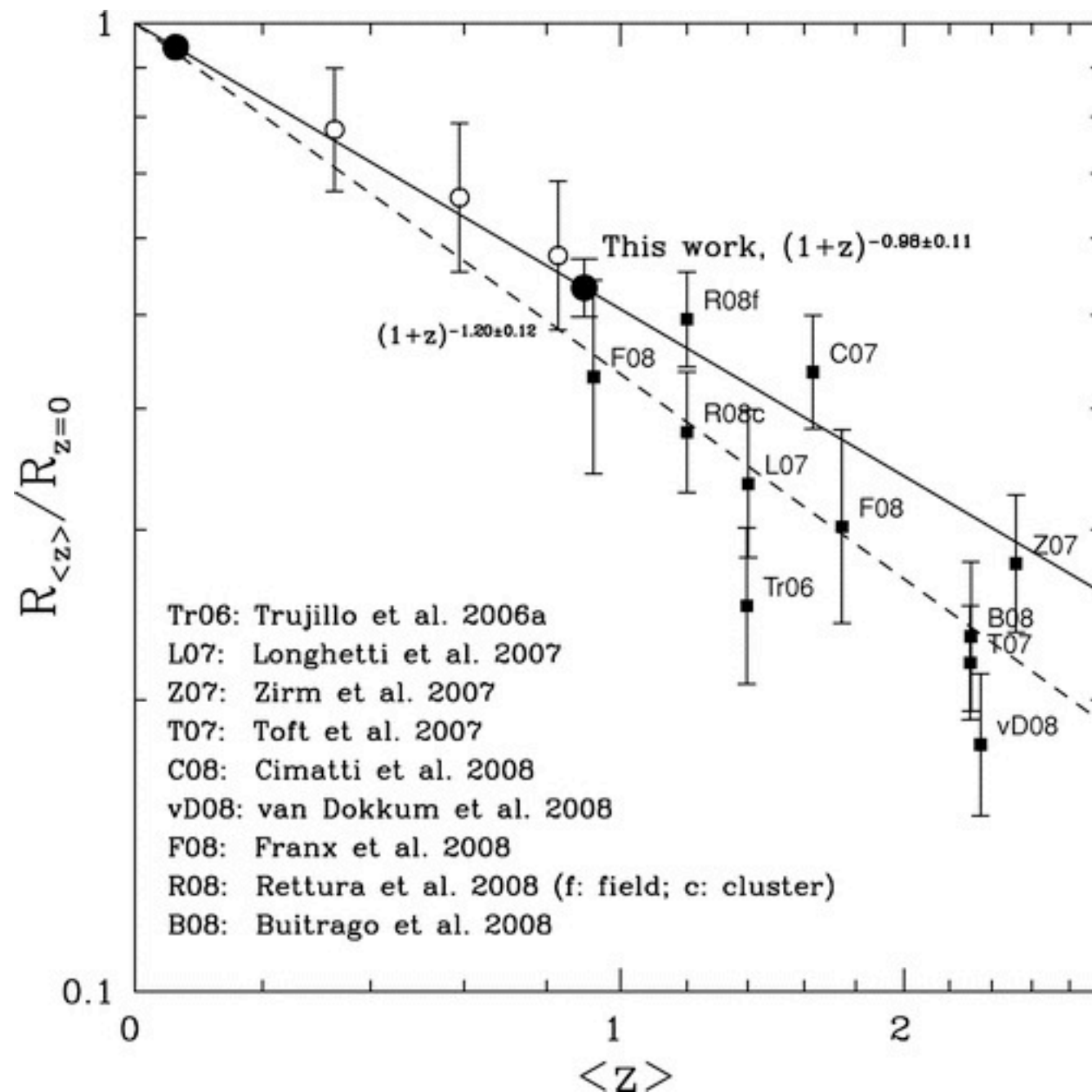
# Astro 220: Galaxies and cosmology

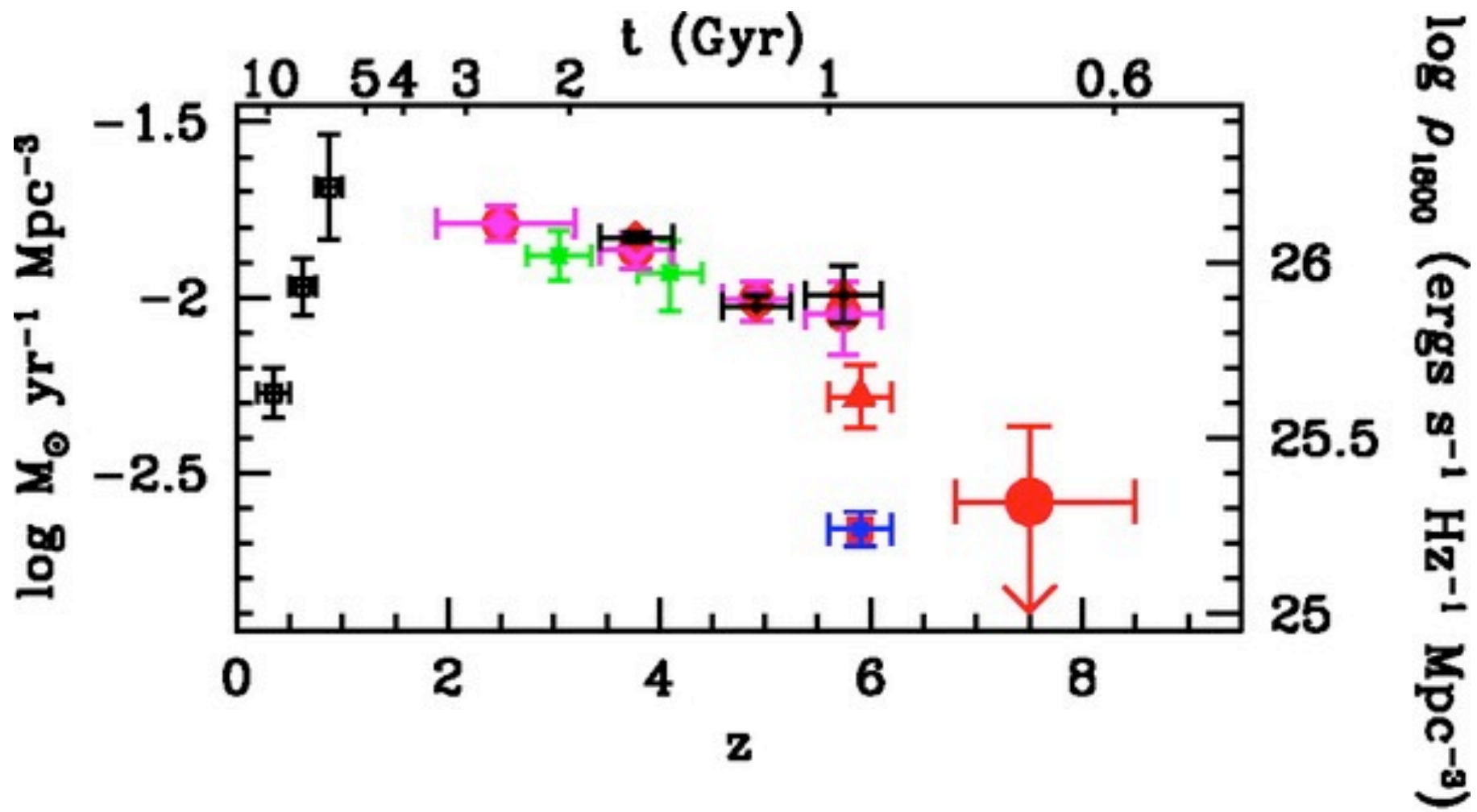
Dec 1, 2010

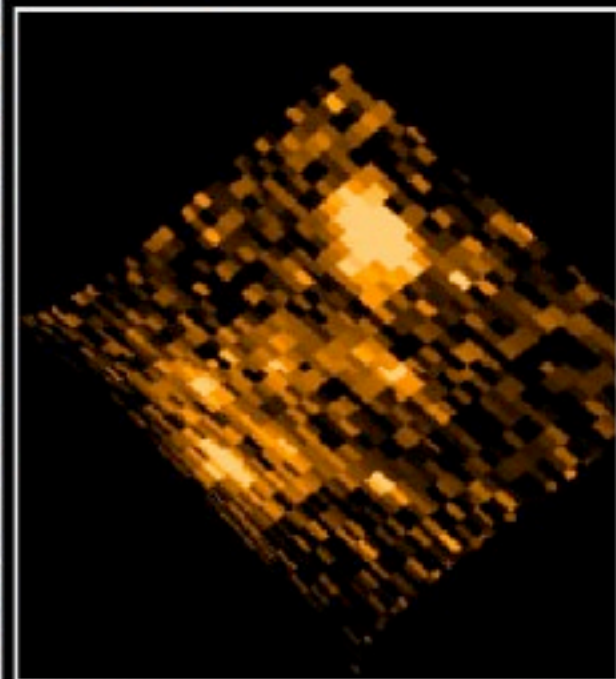
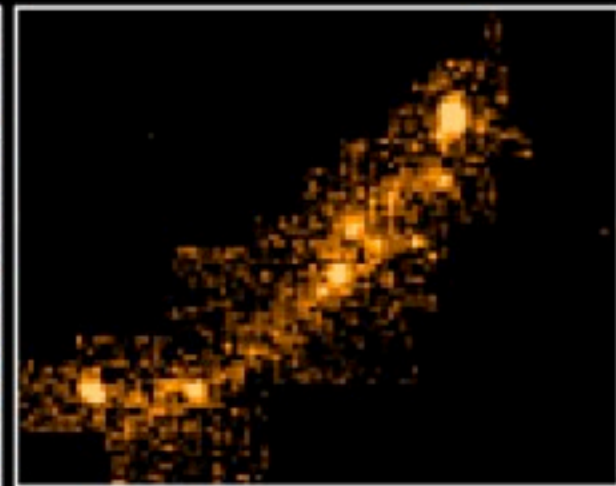
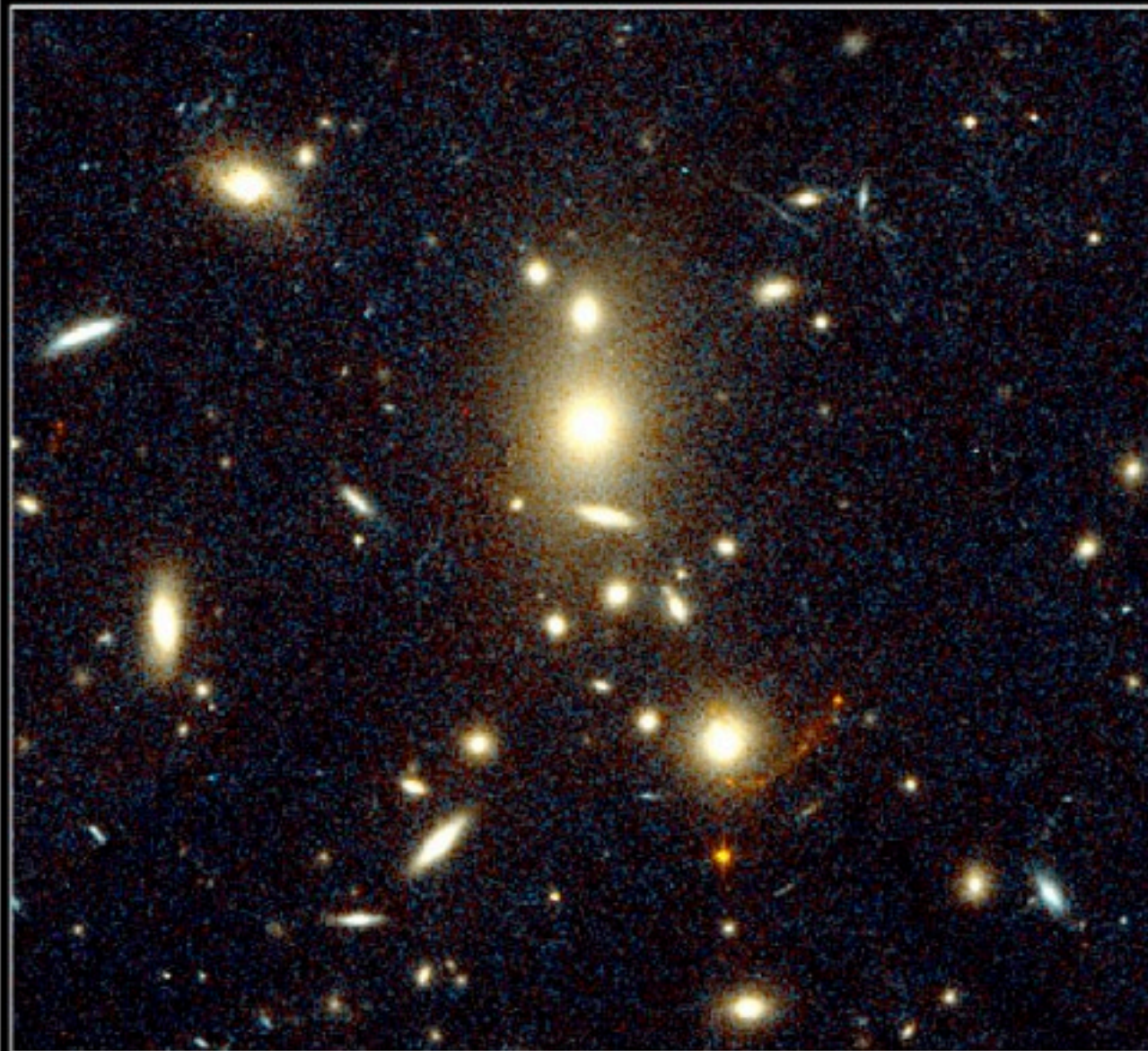










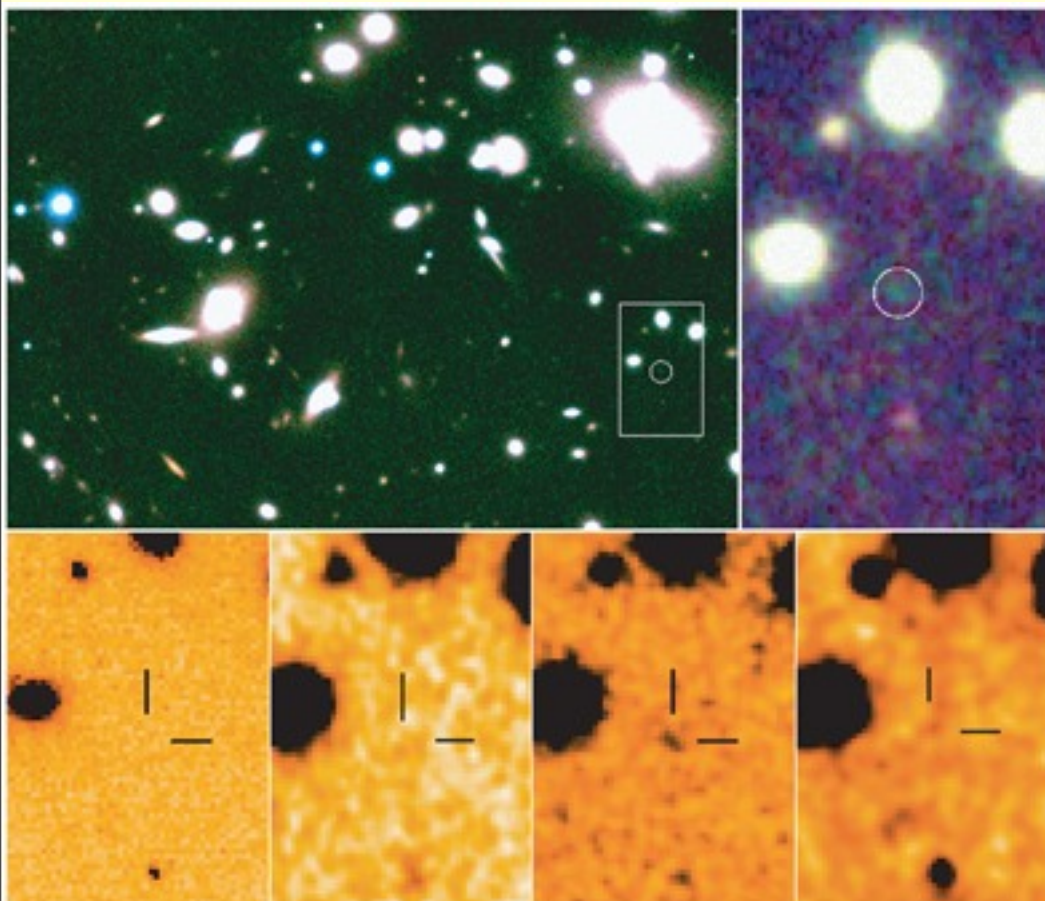


## Gravitationally Lensed Image of Highest Redshift Galaxy

PRC97-25 • ST ScI OPO • July 30, 1997

M. Franx (Kapteyn Astronomical Institute), G. Illingworth (Lick Observatory) and NASA

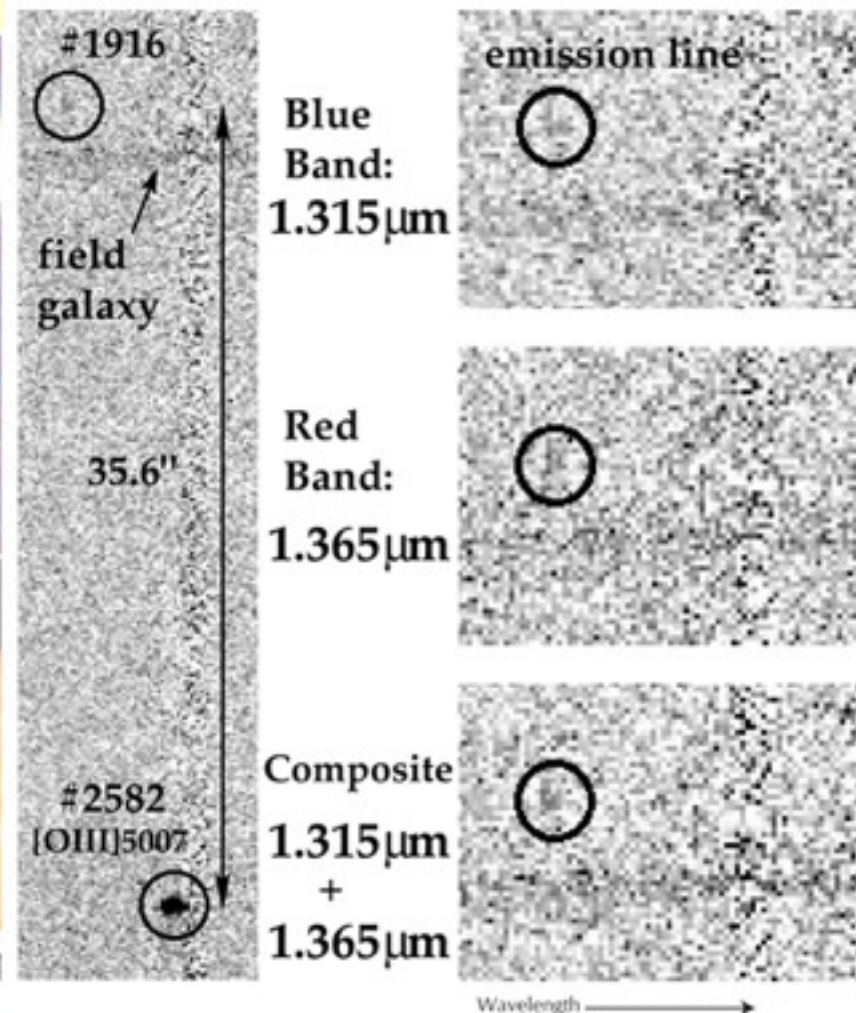
HST  
WFPC2



Abell 1835 IR1916 - the Farthest Galaxy - Seen in the Near-Infrared  
(VLT ANTU + ISAAC)

ESO PR Photo 05a/04 (1 March 2004)

© European Southern Observatory



Two-dimensional Spectra of Abell 1835 IR1916  
(VLT ANTU + ISAAC)

ESO PR Photo 05b/04 (1 March 2004)

© European Southern Observatory



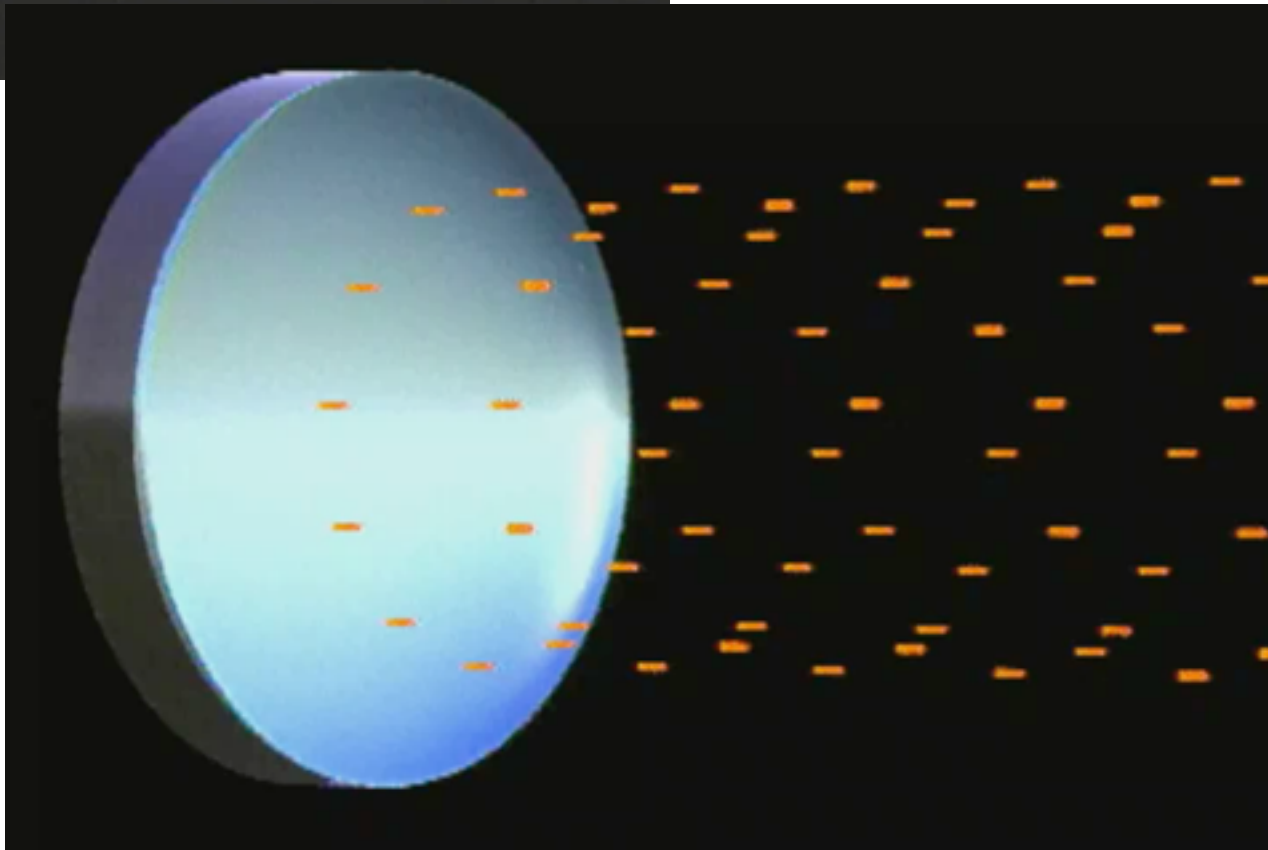
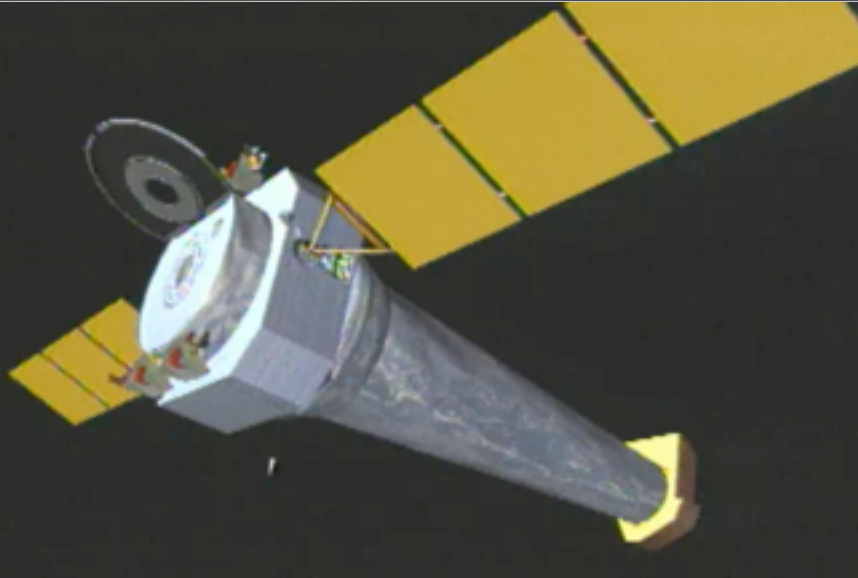




Wednesday, December 8, 2010



11

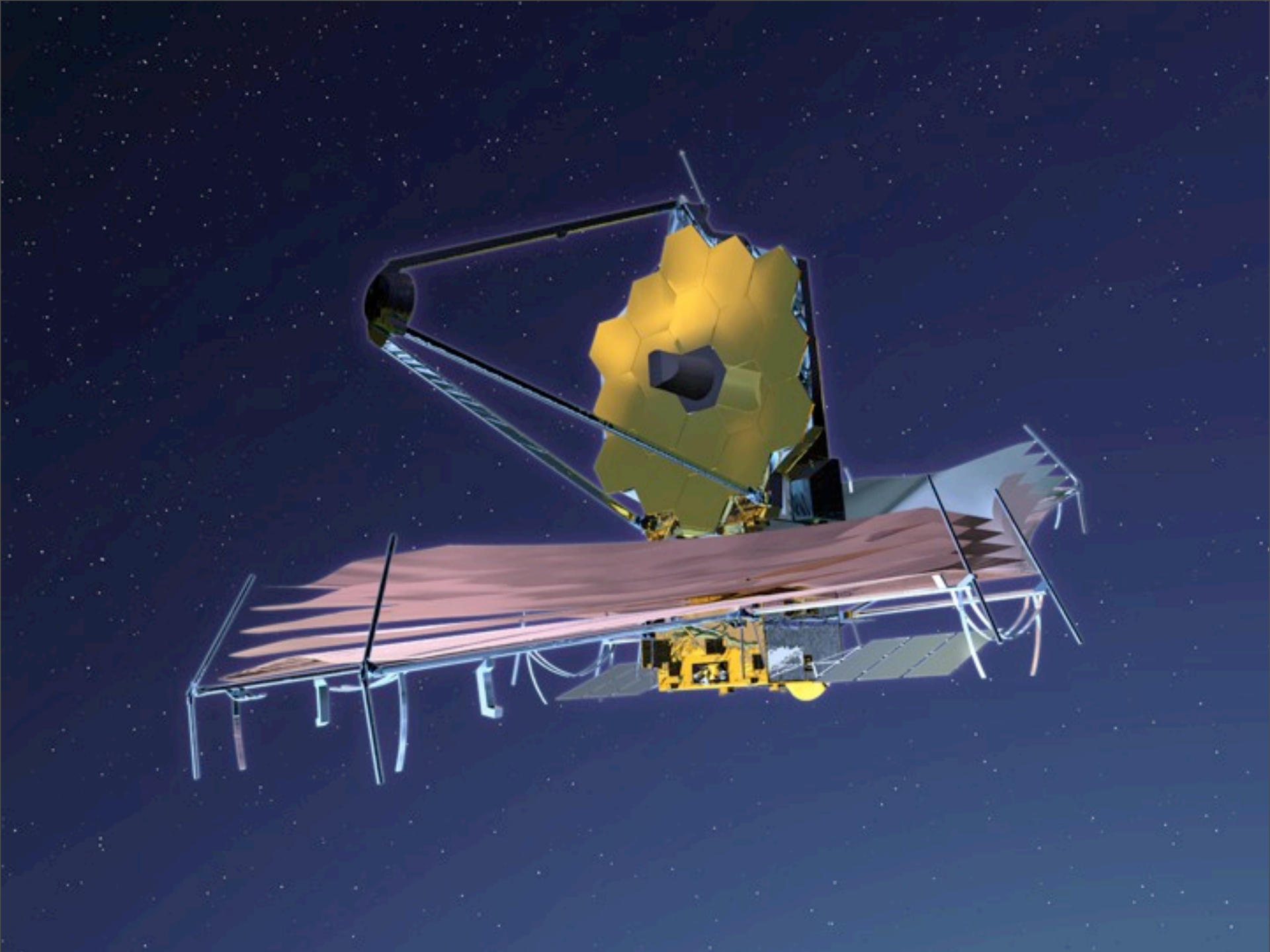




Andromeda Galaxy  
GALEX



Andromeda Galaxy  
Visible light image (John Gleason)

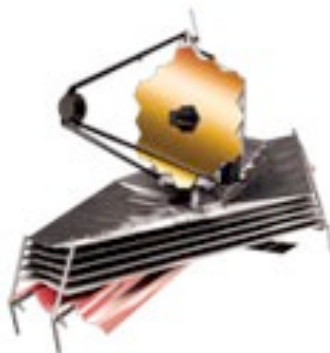


Wednesday, December 8, 2010

Boeing 737-200  
100 feet long



JWST  
72 feet long



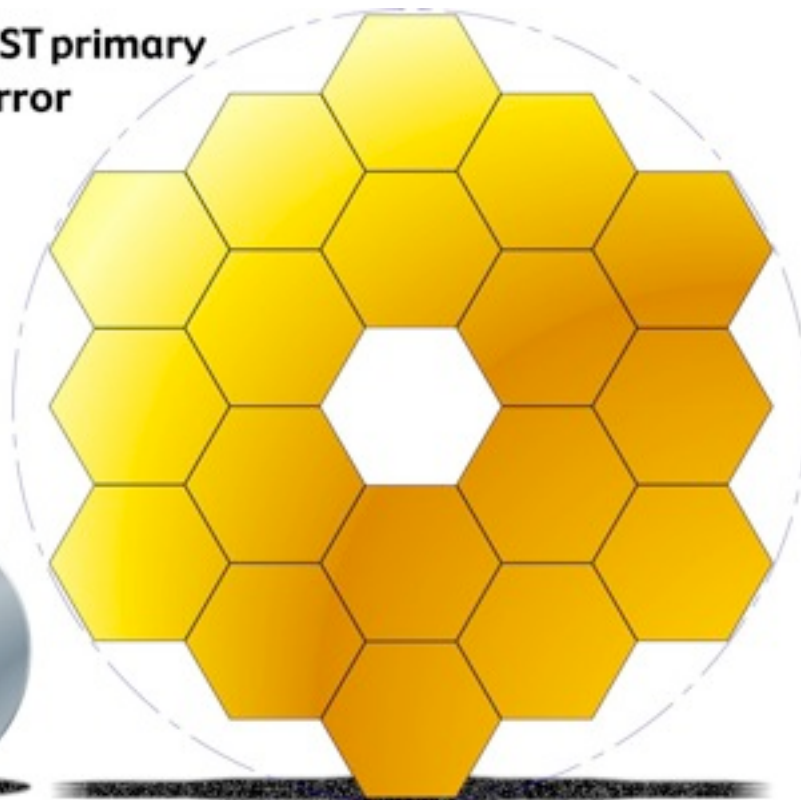
School Bus  
44 feet long



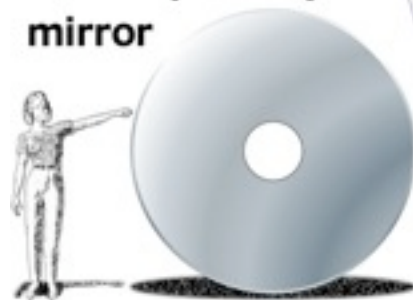
HST  
44 feet long

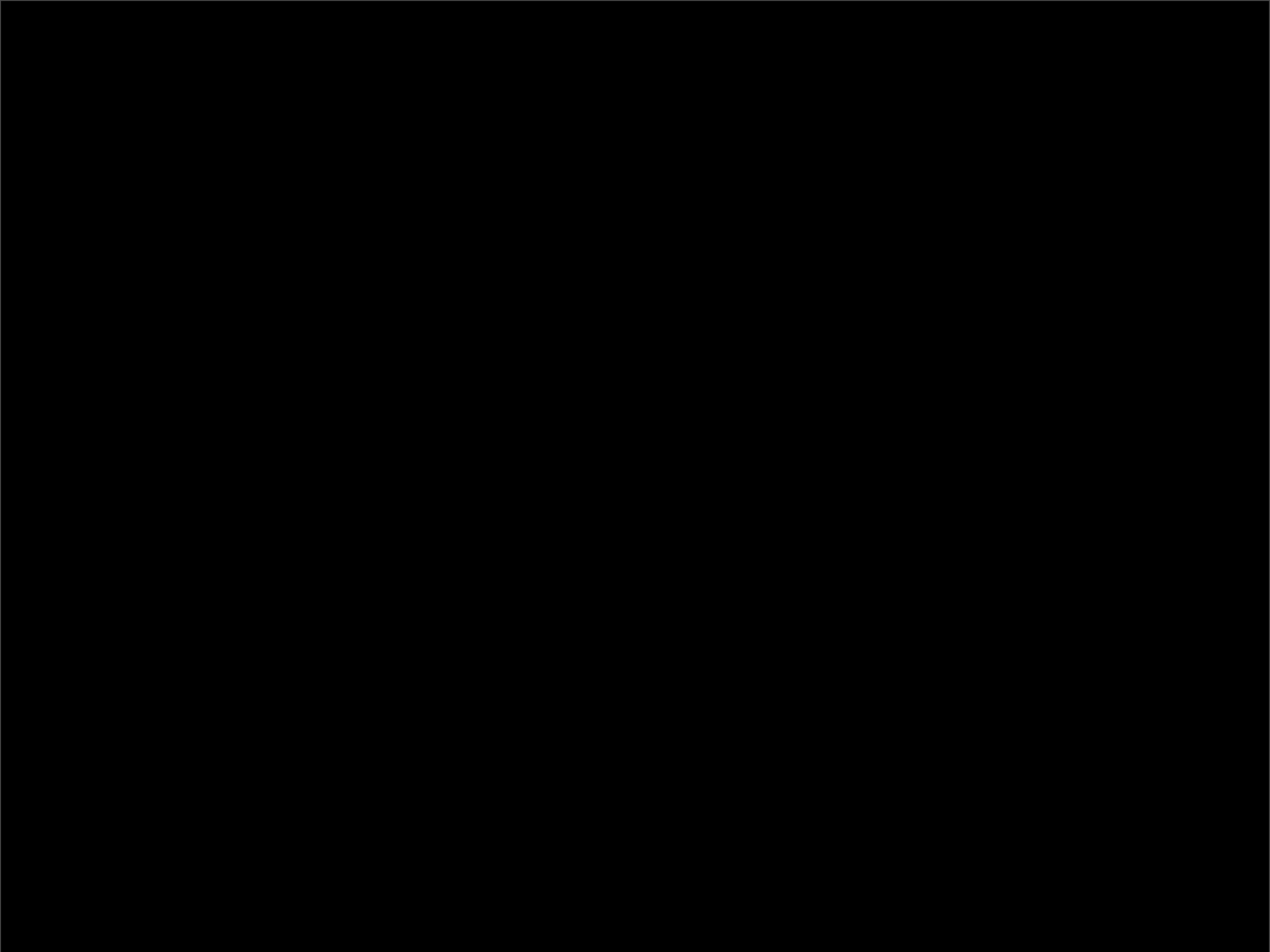


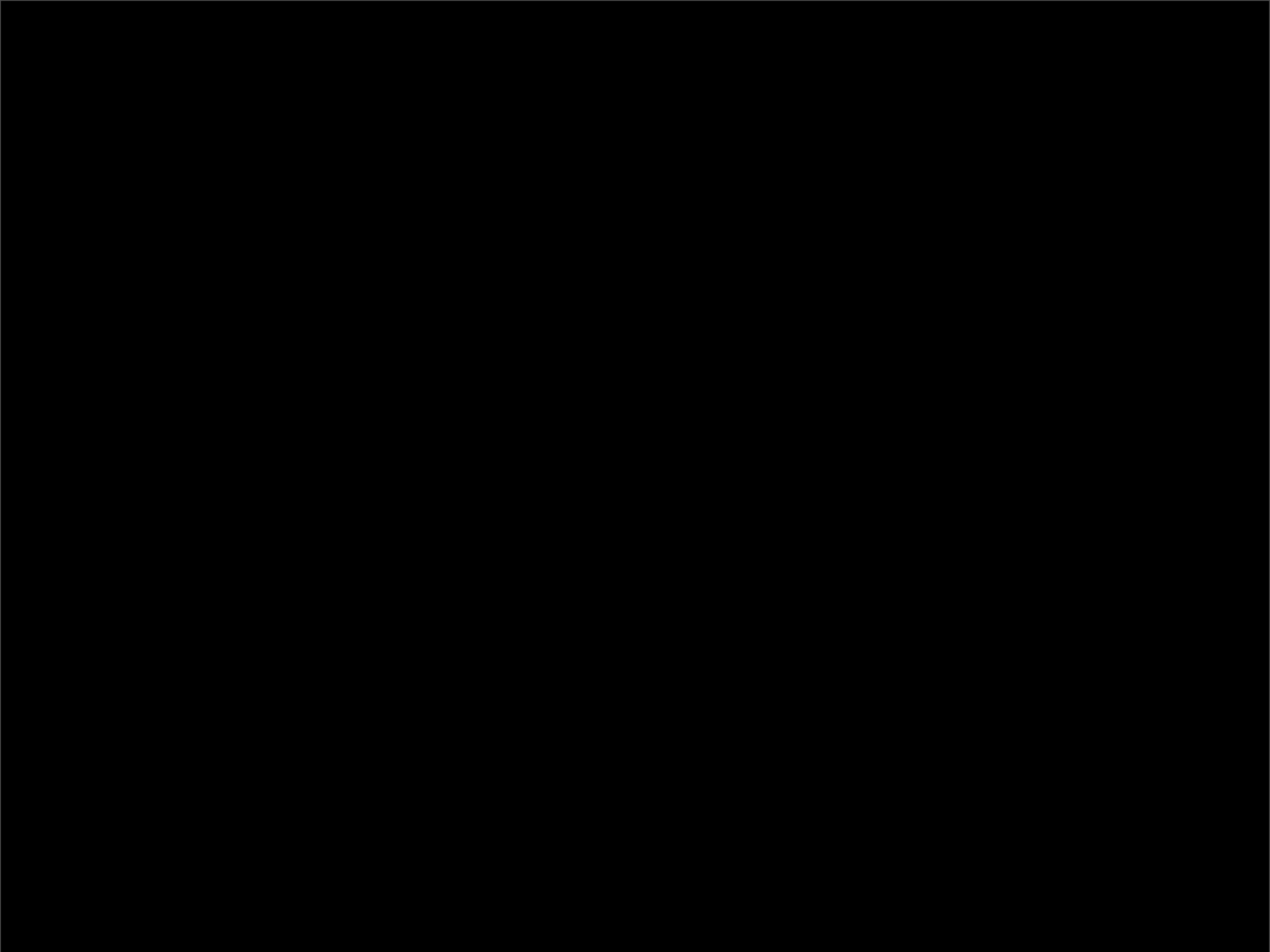
**JWST primary  
mirror**



**Hubble primary  
mirror**

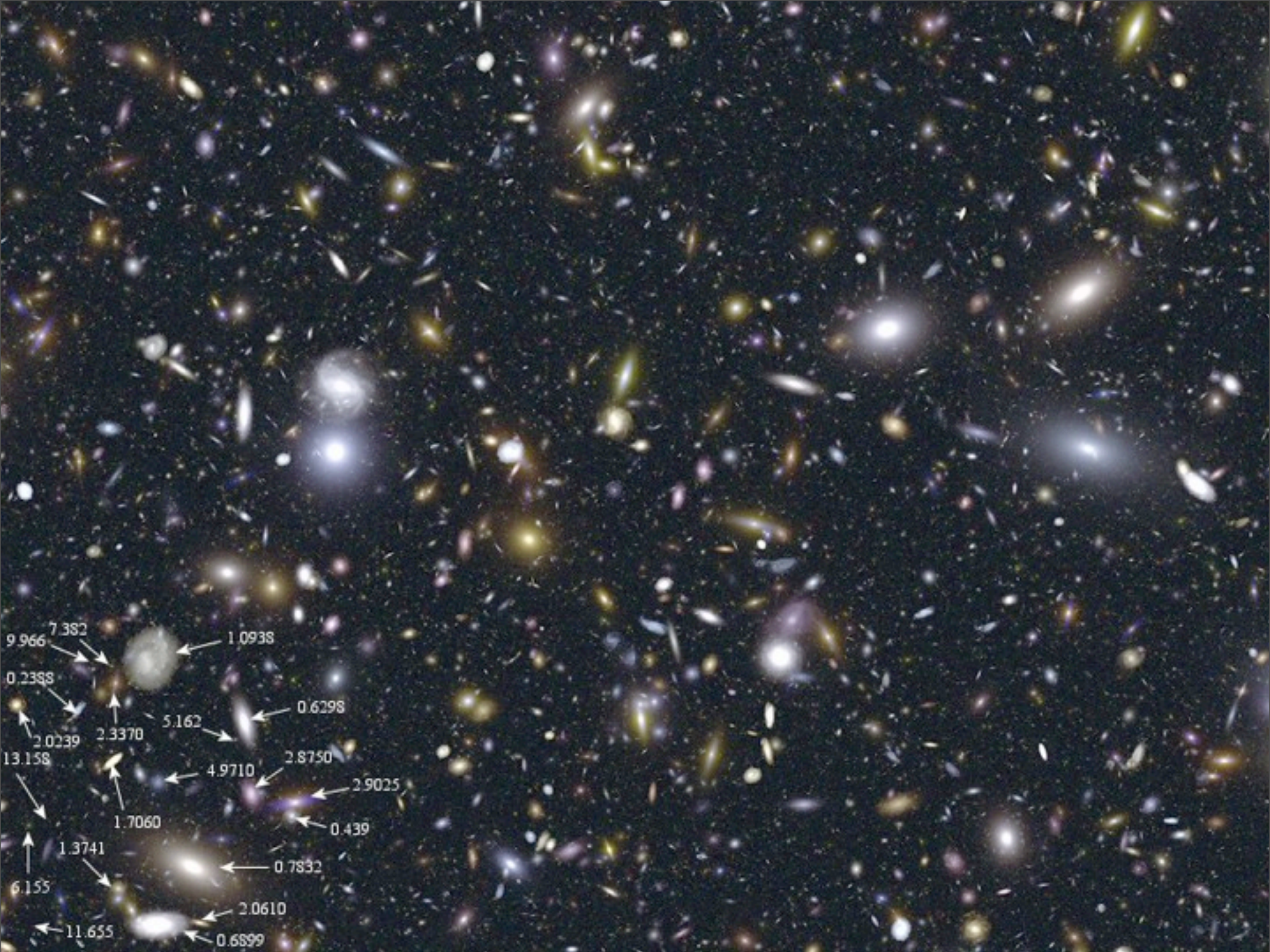




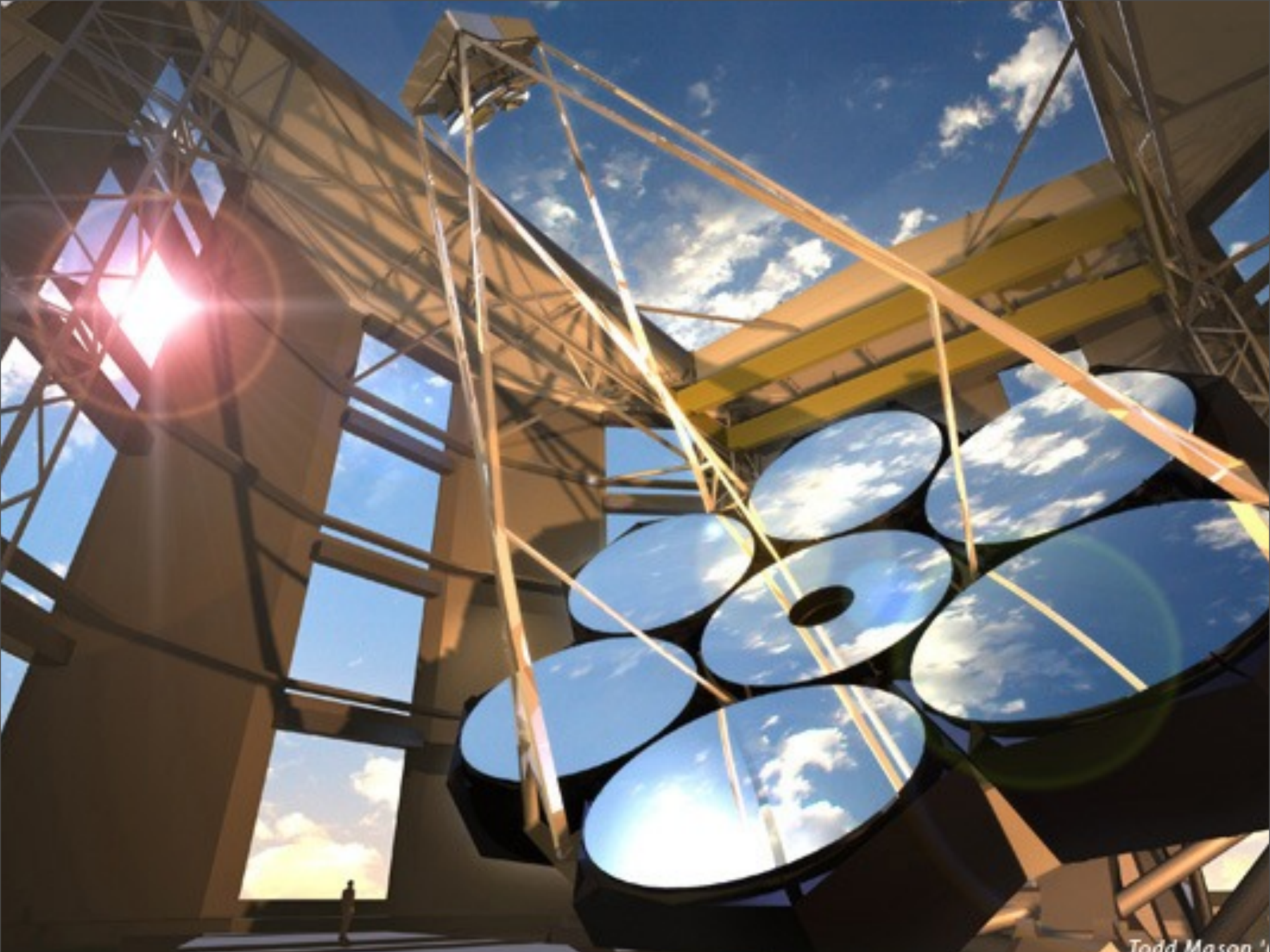




Wednesday, December 8, 2010



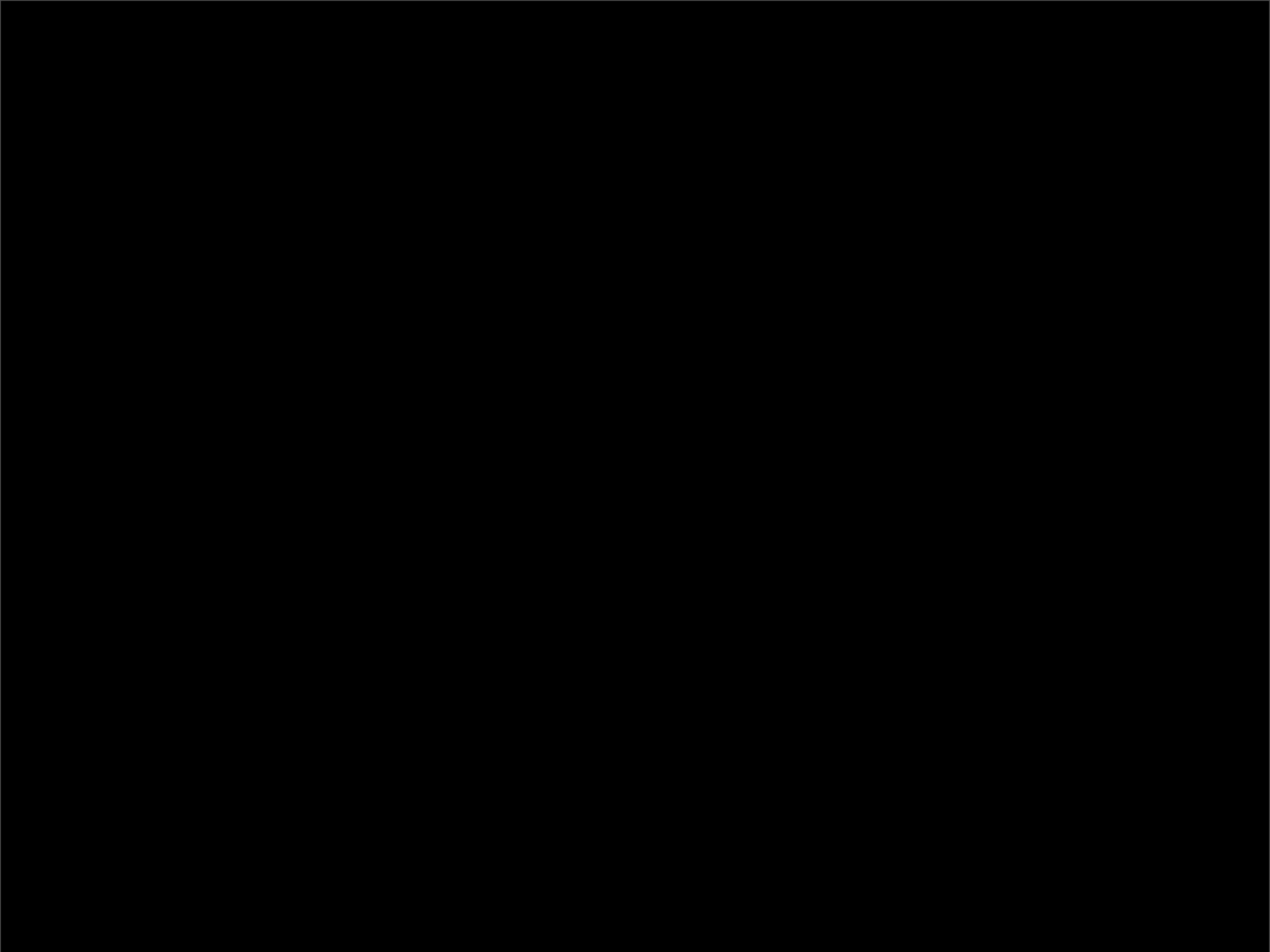
Wednesday, December 8, 2010

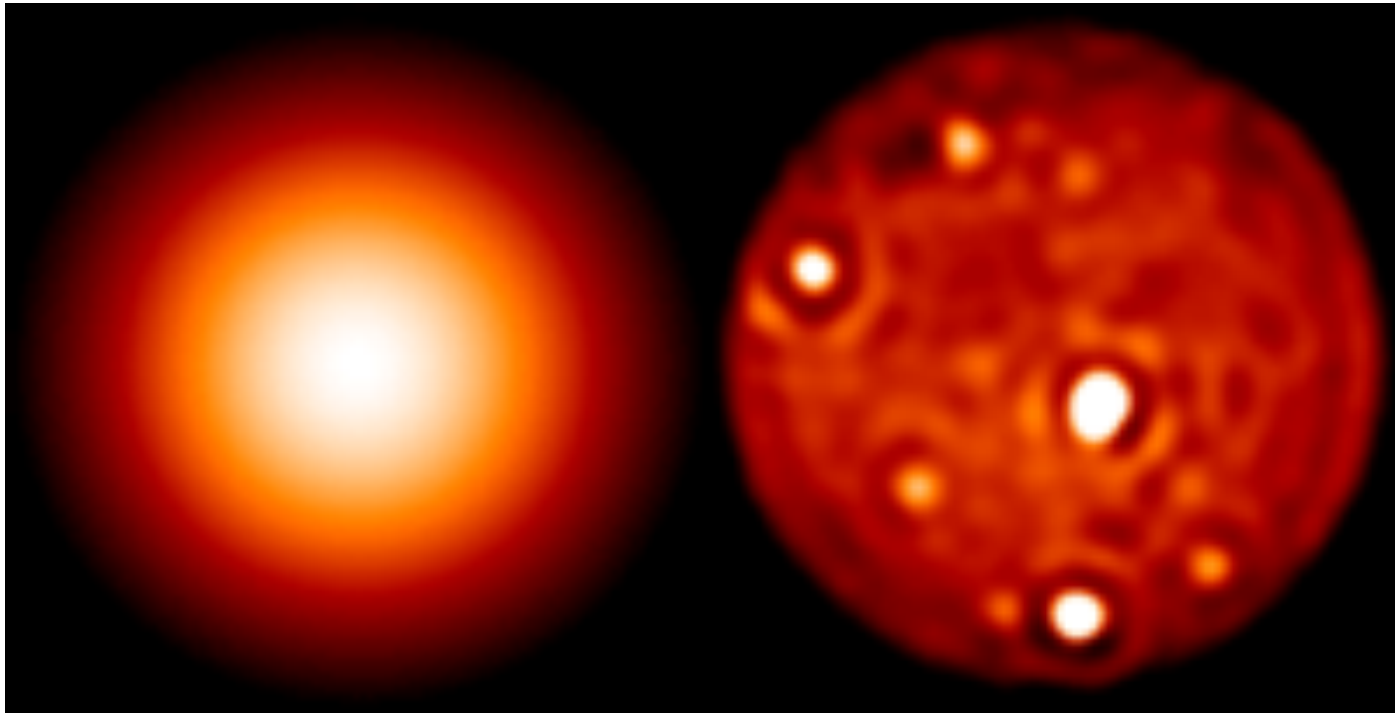


Todd Mason '11

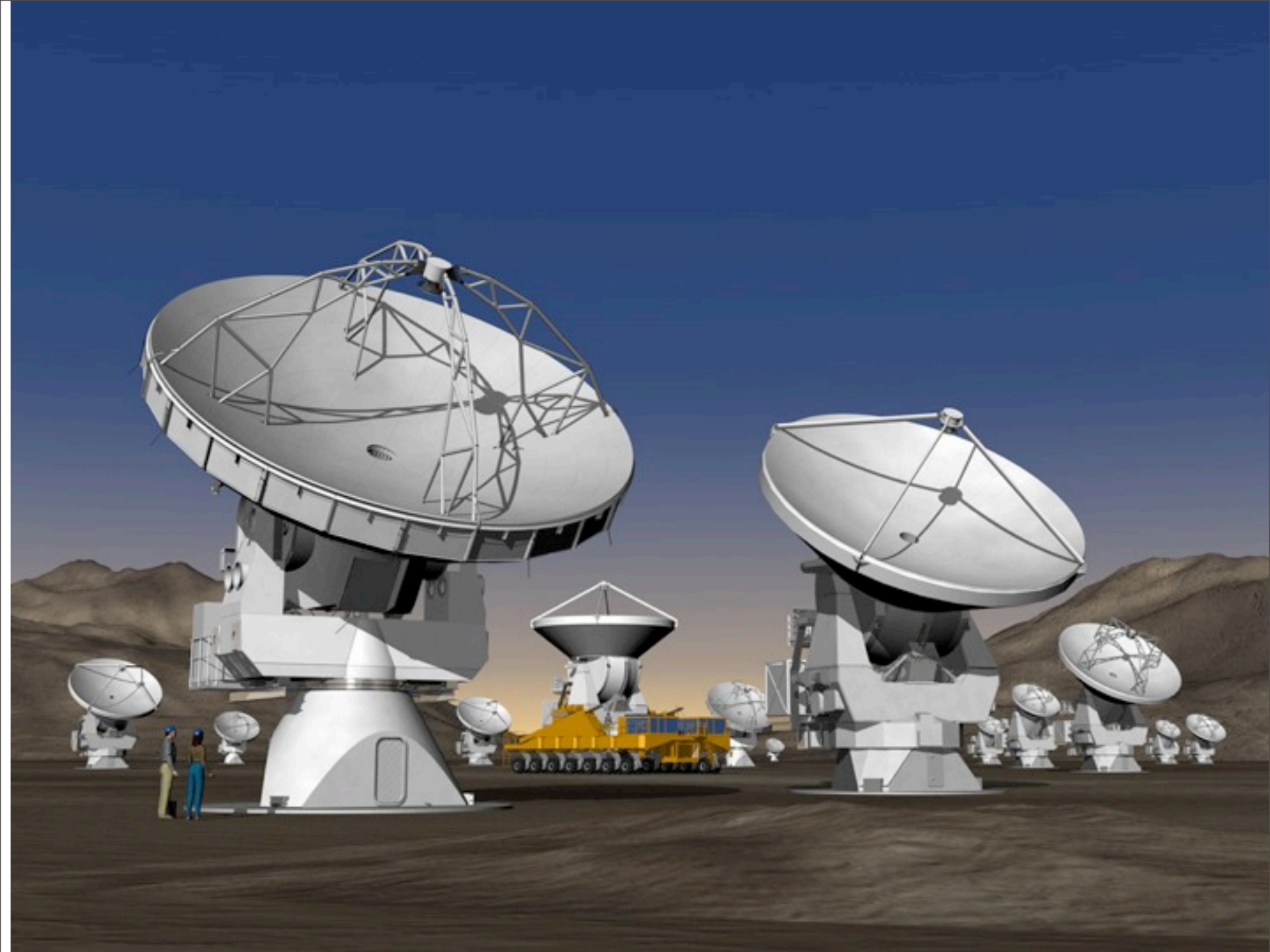
Wednesday, December 8, 2010







Volcanos on Io (moon of Jupiter)



Wednesday, December 8, 2010



Wednesday, December 8, 2010



© ASTRON



Wednesday, December 8, 2010



